

Name _____

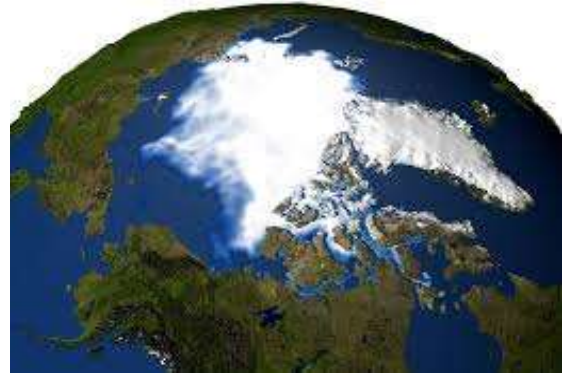
Animals & Habitats, Lesson 2: Animals of the Arctic Habitat

Read Aloud Review

Today we learned about the arctic habitat! The arctic is at the top of the Earth.

Directions

Your job is to cut out the animals and put them in the correct places in the arctic.



Word Work

trace over the word:

exposed

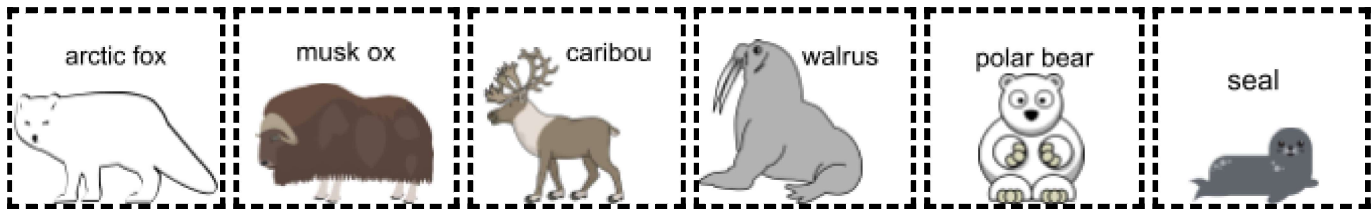
Meaning: When something is **exposed**, it means that it is unprotected or is out in the open and can be seen.

Directions: Circle the parts of the body that are **exposed**.



Why would you not go out in the snow wearing what that boy is wearing?

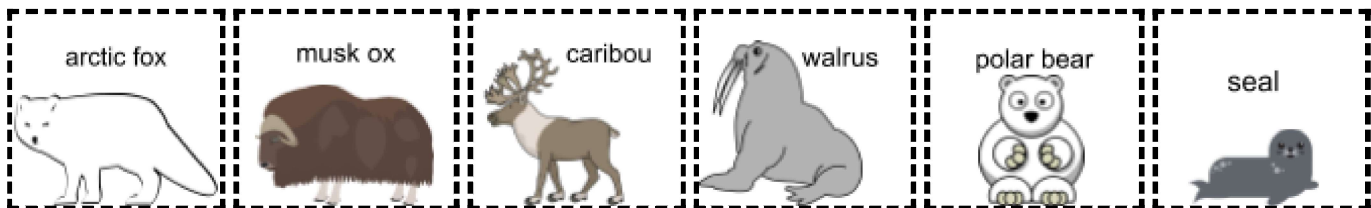
Cut and glue pictures for lesson 2



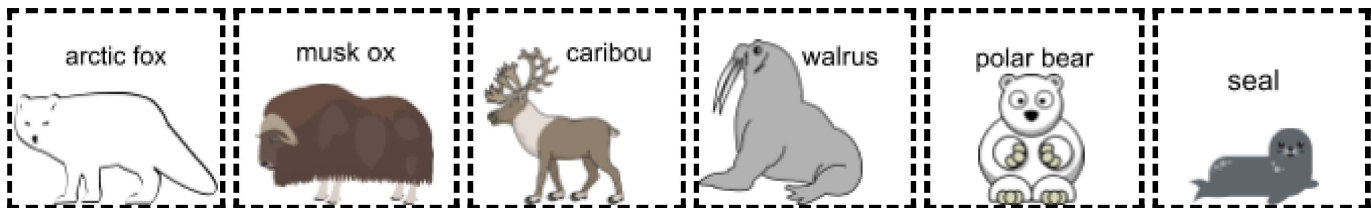
Cut and glue pictures for lesson 2



Cut and glue pictures for lesson 2



Cut and glue pictures for lesson 2



Cut and glue pictures for lesson 2



Cut and glue pictures for lesson 2

