

Chromebook Use & Care



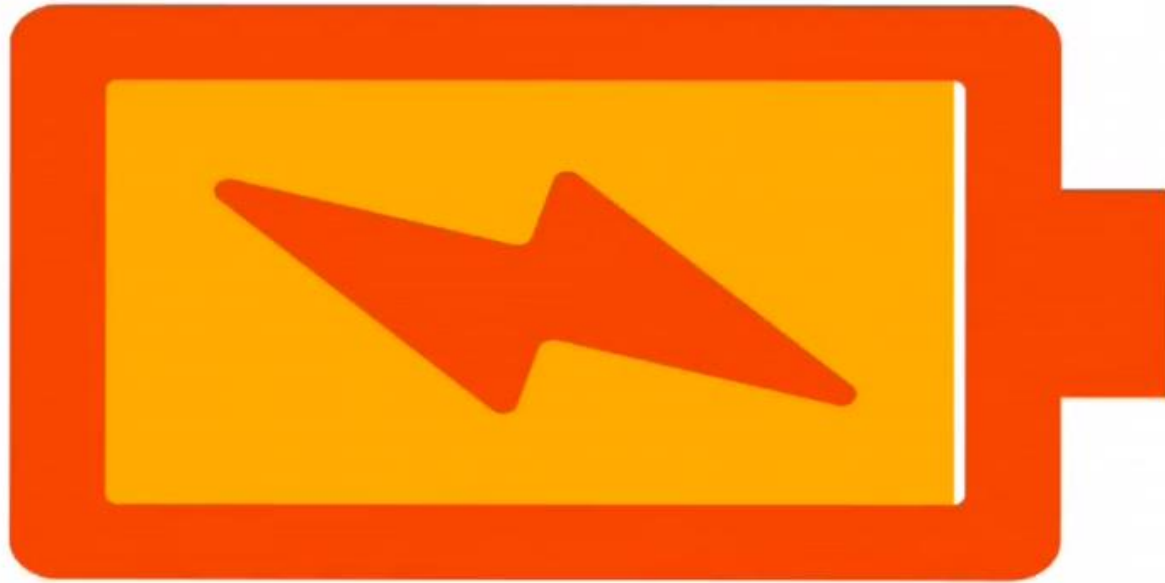
Mr. Murphy
Technology Department



Do's and Don'ts

Chromebook Edition

**YOU are responsible
for the care of your
device.**



CHARGE IT

**SO YOU CHARGE YOUR PHONE
OFF YOUR CHROMEBOOK...**



**...THEN YOU WONDER WHY YOUR
BATTERY DIES?**



**KEEP
CALM**

AND

**CHARGE YOUR
CHROMEBOOK**

DON'T LOSE| YOUR CHARGER!

\$25



EARBUDS ARE REQUIRED EVERY DAY





**HANDLE
WITH CARE**

**Never leave your
chromebook on
the floor**





**BE GENTLE
WITH THE SCREEN**



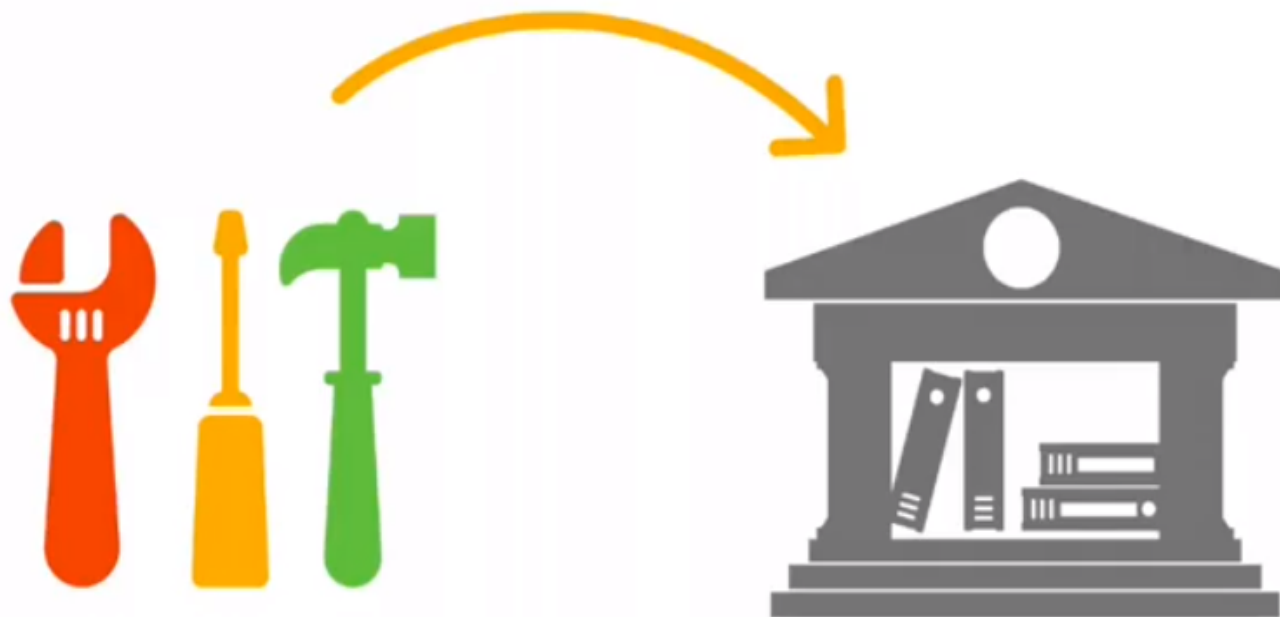
**Keep Food & Drinks
Away From Computer**





**Be mindful of your behavior
around your computer**



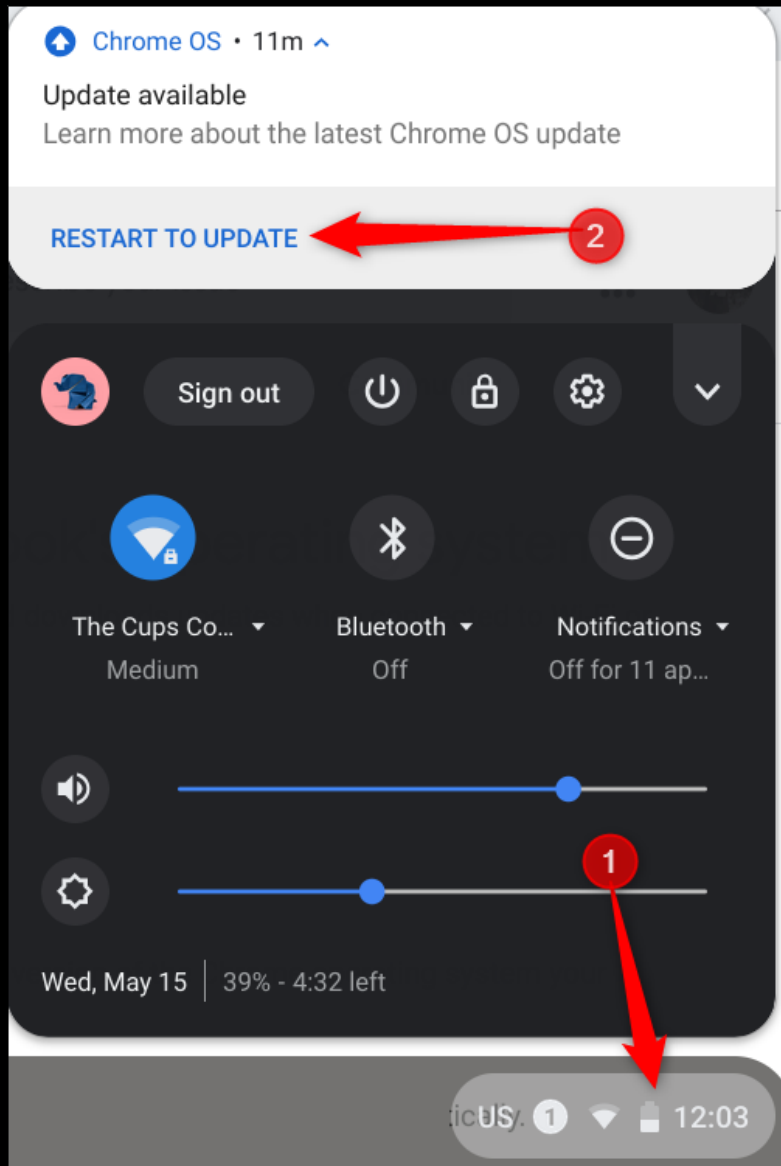


**TELL US
IF IT'S BROKEN**



DON'T LOSE YOUR CHROMEBOOK





Updates

Cures 99.999%
of all
Chromebook
Issues

Settings

Search settings

- Network
- Bluetooth
- Connected devices
- People
- Device
- Personalization
- Search engine
- Apps
- Linux (Beta)
- Advanced

About Chrome OS

About Chrome OS



Google Chrome OS

Version 85.0.4183.108 (Official Build) (64-bit)

[Check for updates](#)

See what's new



Get help with Chrome OS



Report an issue



Additional details



Your Chromebook is managed by forestville.com



Google Chrome OS

Copyright 2020 Google LLC. All rights reserved.

Google Chrome is made possible by the [Chromium](#) open source project and other [open source software](#).

Chrome OS is made possible by additional [open source software](#).

[Terms of Service](#)



Technical Issues???



We are having some
technical problems

**Notify us immediately
so we can fix it!**

24/7 Filter/Monitoring

← BACK TO LIST

Johnny Smith

browsing google.com (5 days ago)

Behavior

Activity Log

Related Alerts

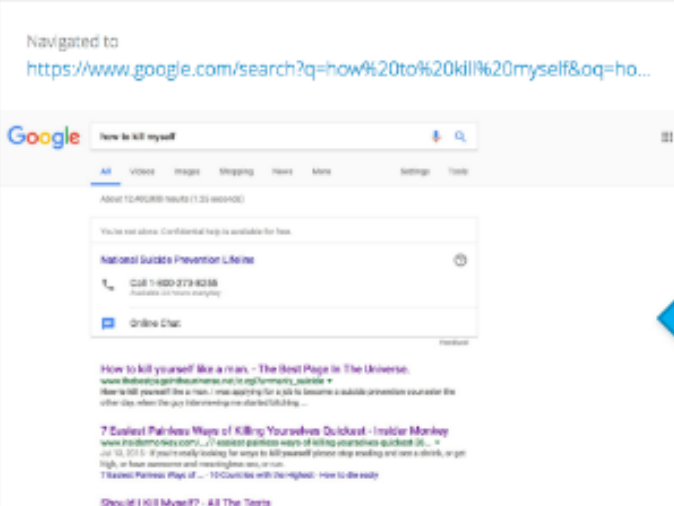
JUN 8TH, 2017

3:20 pm Navigated to
<chrome-extension://haldglcdplngggkjaafhelgiaglafanhvx3-block.html#252>

3:20 pm Navigated to
<https://smart-alerts.goguardian.com/alerts/332629/behavior>

3:20 pm Navigated to
https://www.youtube.com/results?search_query=x

3:23 pm Navigated to
<https://www.google.com/search?q=how%20to%20kill%20myself&oq=ho...>



F

Alert

- Website
[google.com](https://www.google.com)
- Date / Time
6/8/17 3:23 pm
- Category
Self-Harm
- IP
54.186.186.54
- Reference No.
0000 0000 0033 2665
- Status
Active ▾
- Viewed (2)
Tyler
Kirk
- Assigned (1)
Kirk
[Edit users...](#)

G

Student

- Name
Johnny Smith
- Email
jsmith@usd.org
- OU
/ Class of 2020

H

Printable Alert

Would you like to include screenshots?



No Internet Connection

**HOME WiFi
IS NOT A REQUIREMENT**





**DO HOMEWORK IN
LIVING AREA**





Chromebook Use & Care



Mr. Murphy
Technology Department